

## Flower Abstraction

---

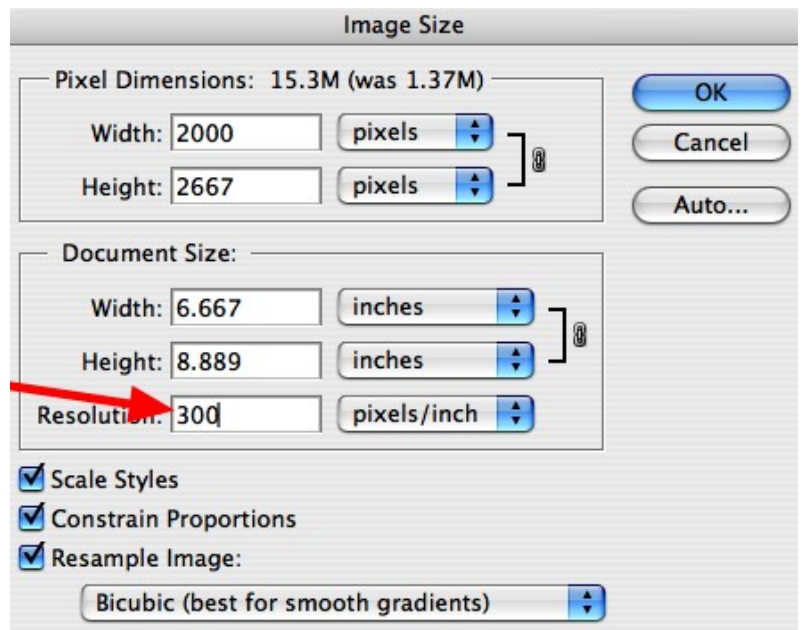
Open one of the flower images that are provided.



## Change the dpi if necessary

Check and make sure that the image dpi is 300. If it isn't change it.

Image>Image size

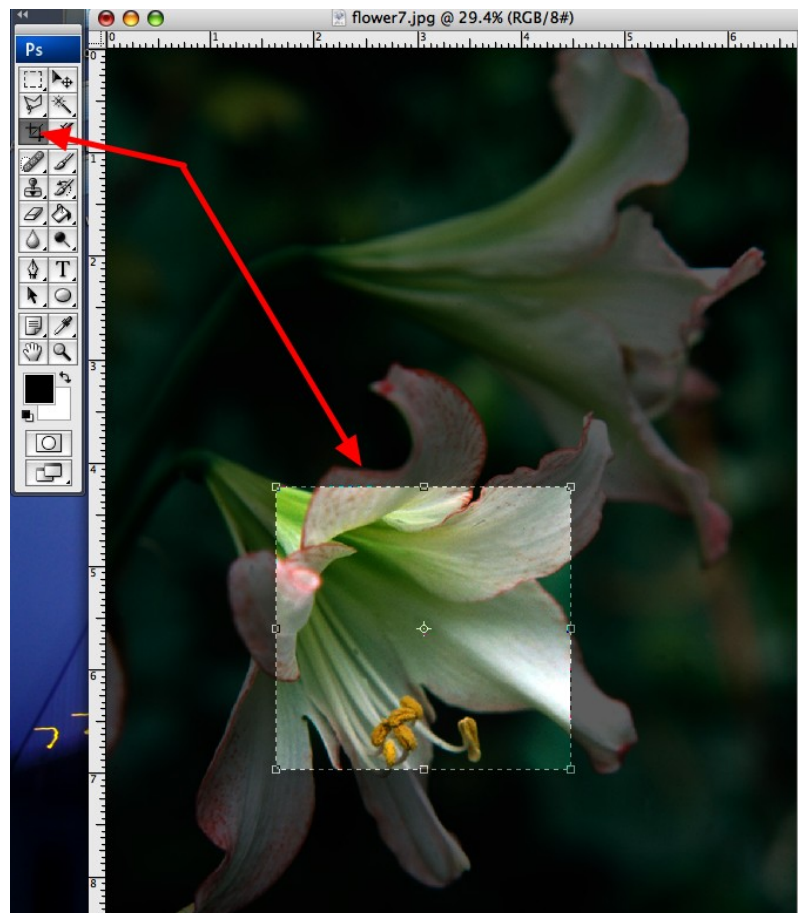


## Crop the image

Use the crop tool and zoom in close to an interesting part of the flower.

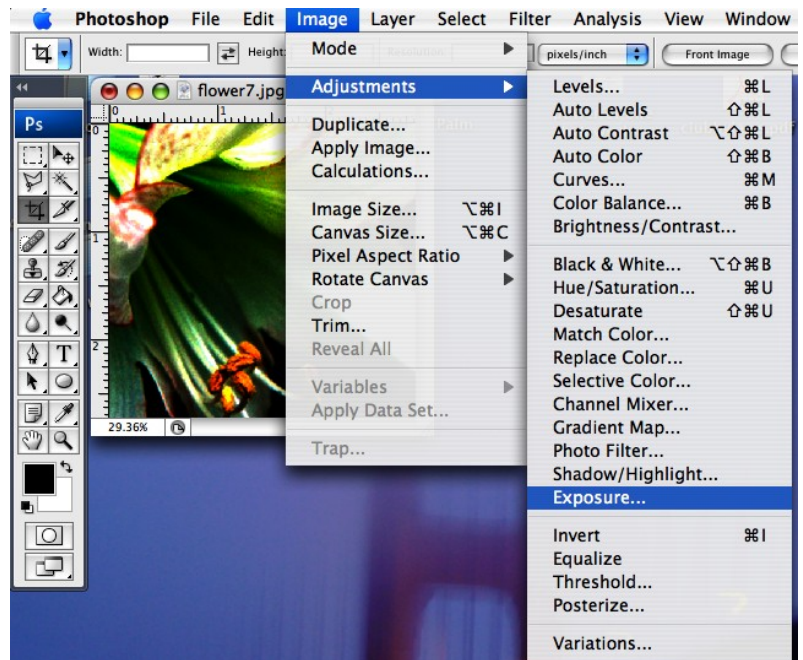
Go in close and see if you can find a section of the flower that is somewhat detailed.

Click *return* to set the cropped image.



## Change the Exposure

Go to Image>Adjustments>Exposure to adjust the image and make it more dramatic. You're looking for good contrast, lights and darks.



Play with the sliders and look for a good balance of lights and darks

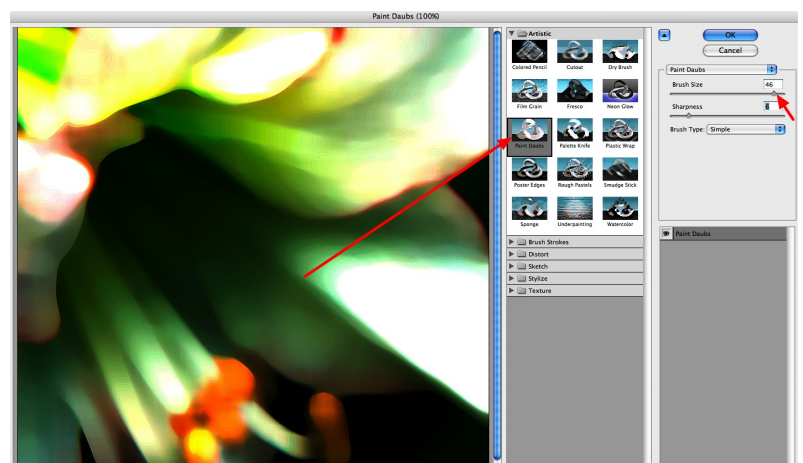


Now you're going to use the Photoshop effects to make the image look like it was painted.

Go to Filters>Artistic>Paint Daubs

Move the brush size and the sharpness sliders until your image looks like it's been painted with a brush. Your settings might be different from the example.

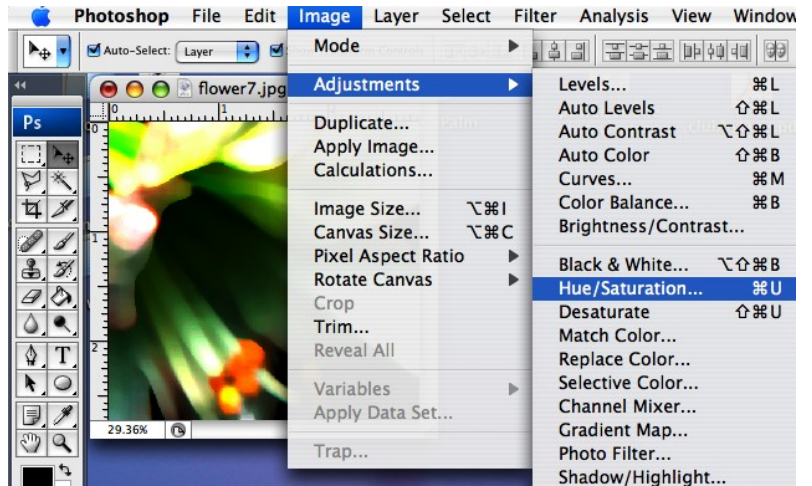
Don't go for a lot of detail. Look for a good composition and light and



darkness balance.

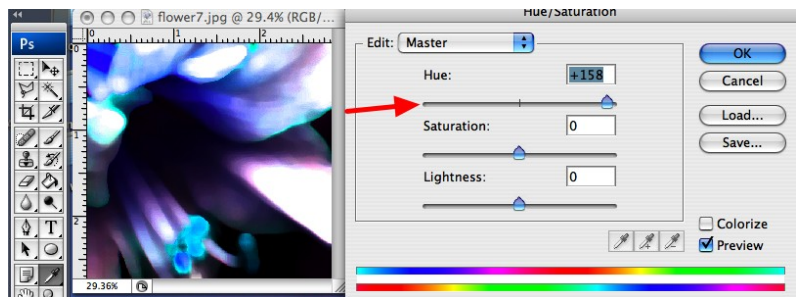
To further abstract the image, you need to change the color.

Go to Image>adjustments  
>Hue/Saturation



Move the Hue slider to the right or to the left until you get a color you like.

Click OK.

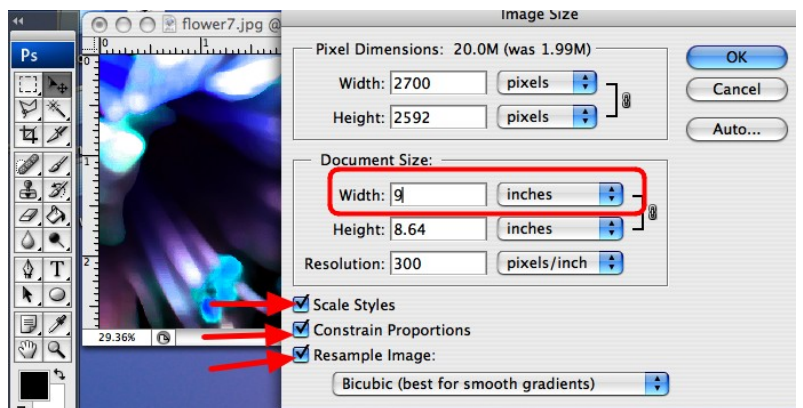


Finally, you need to change the size of the image.

Go to Image>image size

Change the Document Size width to 9 inches.

Make sure you have the Scale Styles, Constrain Proportions, and Resample Image boxes checked.



**Save the image as yourname.flower1.jpg and put it in the teacher dropbox.**

